

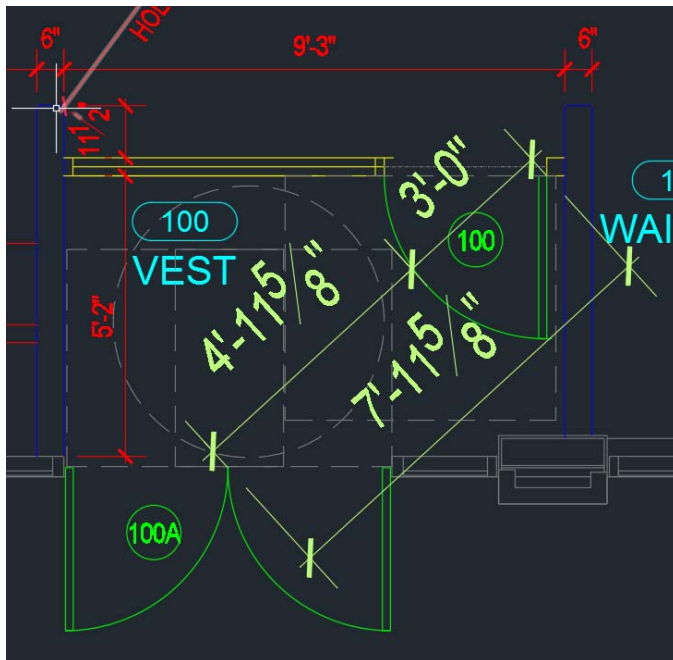
**INTERPRETATION IC 90.1-2007-37 OF  
ANSI/ASHRAE/IESNA STANDARD 90.1-2007  
Energy Standard for Buildings Except Low-Rise Residential Buildings**

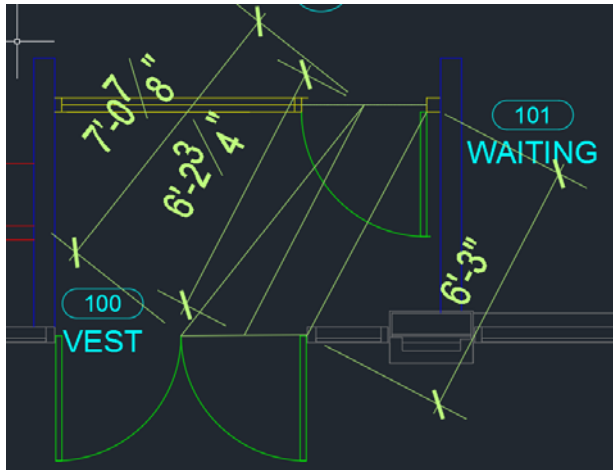
**Date Approved:** April 7, 2018

**Request from:** Kevin Hupf, ASHRAE Nebraska, 2111 South 67<sup>th</sup> Street, Suite 200, Omaha, NE 68106.

**Reference:** This request for interpretation refers to the requirements presented in ANSI/ASHRAE/IESNA Standard 90.1-2007, Section 5.4.3.4, regarding the distance between doors in a vestibule.

**Background:** We have a vestibule in a restaurant in Indianapolis, IN. The vestibule has offset doors and is not in series. ASHRAE/IESNA 90.1-2007 (which is the adopted state energy code) states that a minimum distance of 7 feet is required. With offset doors, how is this distance to be measured?





**Interpretation:** Is measuring from the hinge of the interior door to the center of the exterior door an acceptable method of measuring the 7 foot requirement when offset doors are installed?

**Question:** Is this interpretation correct?

**Answer:** No.

**Comments:** Measuring the minimum requirement for door distance, including offset doors, from center to center is compliant.